

DZ-820/2SAZD

FULLY-AUTOMATIC

VACUUM PACKAGING MACHINE

OPERATION MANUAL

Model	DZ-820/2SAZD
Voltage	AC 380V/50Hz 220V/50Hz
Motor Power	3000W
Sealing Power	1400W
Ultimate Vacuum Pressure	1KPa
No. of Sealing Bars for Each Chamber	2pcs
Chamber Dimension(LxWxH)	880X755X170mm
Sealing Length	820mm
Sealing Width	10mm
Vacuum Pump Rate	100 m ³ /h
Material for Vacuum Chamber	Stainless steel
External Dimension (LxWxH)	1845x868x1020mm
Net Weight	295kgs
The center distance from two sealing bars	668mm



INTRODUCTION

The whole machine is made of 304 stainless steel material. Without the need for an external air supply, the vacuum lid can swing automatically by machine negative pressure.

SAFETY PRECAUTIONS

1. Power

1.1 You must use the power that matches the voltage and the electric capacity.

1.2 The grounding wire of the machine must be connected to a reliable grounding device.

1.3 Do not use wires which are smaller than the electric capacity of this machine. Otherwise, it will cause the electricity circuit damaged and lead to the fire.

2. This machine has no waterproof function

2.1 Do not use the machine in a highly humid environment.

2.2 Do not use or place the machine in a place with heavy dust.

2.3 When the machine is used in a highly humid environment, a large amount of water vapor may cause

machine parts rusted and insufficient insulation of electrical appliances. This may result in machine out of work , short circuit or leakage of electricity.

3. The main power switch must be turned off for maintenance or repair or parts replacement.

4. Repairing or replacing parts must be performed by a skilled technician.

5. The machine should not be used until troubleshooting or repair is completed!

6. Never making any alteration to the machine, we are not responsible for any damage caused by your changes. Please read the instruction carefully and use the machine correctly to avoid loss.

THE CONTROL PANEL

1. Display: display the current project
2. "SET" button: call out the setting item
3. "▲▼"key: select the item
4. "ENT" key: confirm and store

5. Start switch:

If it is a single operation, press this button to flip the vacuum lid.



start switch

6. Transfer switch:

conversion of continuous operation and single operation.



transfer switch

7. Emergency stop:

When an emergency occurs, press this button to stop quickly. Once the emergency is handled, unscrew the emergency stop switch and the machine can work again.



8. Power switch:

Turn on the power switch, the machine is ready for working.



power switch

PREPARATION BEFORE USE

- 1.** The machine must be placed in a place that meets the requirement of safe production. Brake the casters to ensure production safety and avoid accidents. All of this can ensure safety and avoid the accidents.
- 2.** The voltage and electricity capacity must meet the requirement of this machine.
- 3.** Check whether the oil level of the vacuum pump meets the requirement (the oil level should not be lower than the oil window calibration and should not be higher than the oil window 3/4).
- 4.** Check if the electrical circuit is well connected. If it is loose or falling off, restore it (The screw may be loose or even shedding during the transportation).

THE CORRECT USE OF THE MACHINE

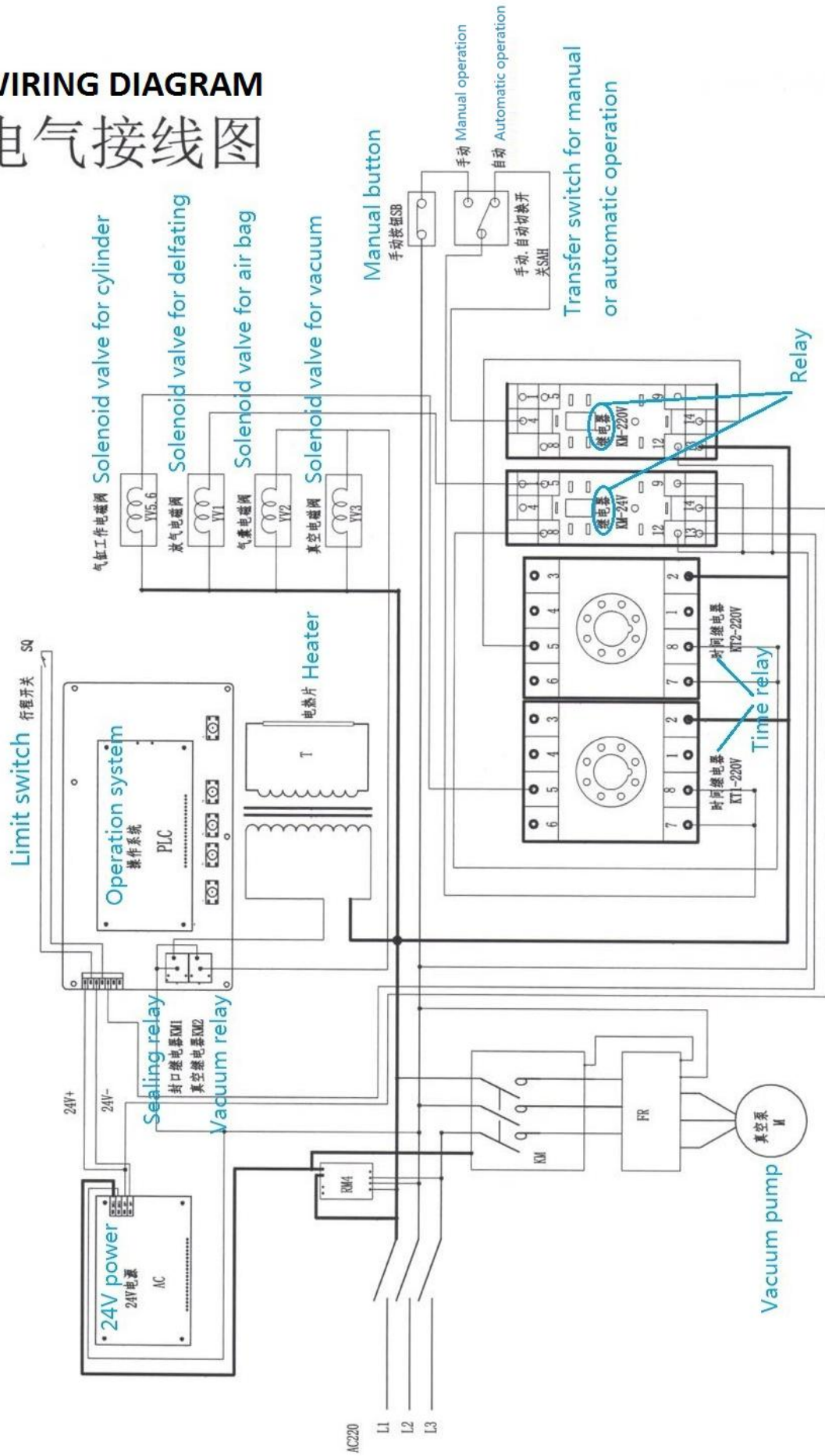
- 1.** Connect the power input line to the power switch of the place and connect the ground wire to the common grounding device.
- 2.** Turn on the machine's power switch. If the machine does not start properly, please exchange any two phases of the three-phase line of the input power, and then access to power again. The machine is equipped with a phase sequence relay to protect the vacuum pump, so it will not burn the motor even if the phase is wrong or lost.
- 3.** Turn on the power switch (vacuum pump works), the display is bright (it shows the word 'Welcome to use vacuum packer'). Press the "SET" button to call out the working mode.
- 4.** Press the "SET" button again to call up the parameter settings (cursor tracking). Press the "▲" "▼" button to select the item (vacuum time, sealing time, cooling time, language), then press the "SET" button to enter the item settings. Press "▲" "▼" button to set the requirement for each item and press the "ENT" button to confirm.

 *Notice!*

When the machine is changed from the single operation to continuous operation, be sure to be done before deflating, otherwise this change will be failed.

WIRING DIAGRAM 电气接线图

820自动摆盖电脑版电路图



MAINTENANCE

Remind: When you open the machine metal cover or vacuum lid, be careful to its corners.

Clean dust and stains. Check if screws in each part are fixed well and properly apply lubricating oil into the transmission parts. Check the oil volume of the vacuum pump.

COMMON FAULTS, CAUSES & TROUBLESHOOTING

Symptom	CAUSE	REMEDY
Sealing not well	High-temperature cloth or silastical bar is dirty	Clean with a cloth
	High-temperature cloth is broken	Replacement
	Silastical bar is broken	Replacement
	Too long or too short time for Sealing or cooling	Adjust the sealing time or cooling time
Uneven sealing	Silastical bar is broken or uneven use	Make it even or Replacement
Failed Sealing	Heating circuit is poor contacted or broken	Checking
	Heating contactor does not work or be damaged	Checking
	Heating Transformer is damaged	Replacement
	Fracture of Heater	Replacement
Vacuum pump working but no vacuum	The Rotary vane of vacuum pump is broken or jammed	Checking or replacement
	Solenoid valve for vacuum is not opened	Checking or replacement
	Vacuum lid is not completely closed	Checking

 ***Attention!***

The machine must not be connected to the power supply before maintenance.